

How to Claim Your Business on Google

Follow our Step by Step Guide to claim your business on Google, and to get your pin on the Google Map!

First, and most importantly, you need a Gmail or Google Account. If you don't have one for your business, take the time to sign up.

Then you can head to the link below! (Just copy and paste it into your browser window)

https://business.google.com/add/info?service=plus&gmbsrc=ca-en-ha-se-z-gmb-s-z-h~bk&ppsrc=GMBS0&utm_campaign=ca-ww-z-z-z-gmb-s-z-l~&utm_source=gmb&utm_medium=z&_ga=2.73153237.791325942.1494537516-658834875.1494537315

Once you follow that link, you will find the page to your right.

Fill out your business name

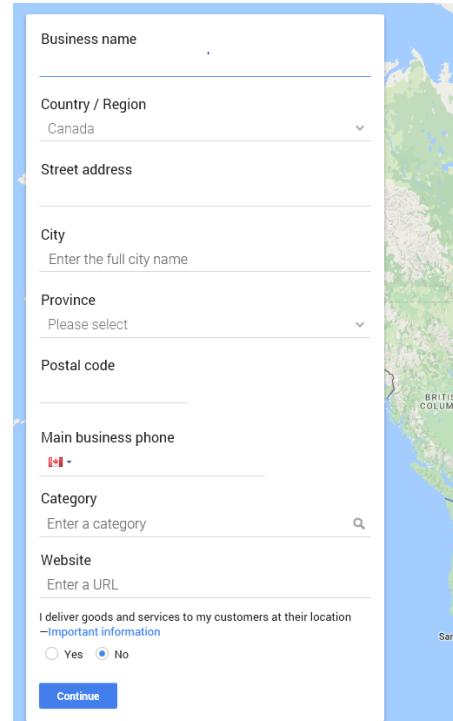
if your business pops up, select it.

If not continue to fill out the form.

*remember to check if you deliver!

Google might ask you to verify your account.

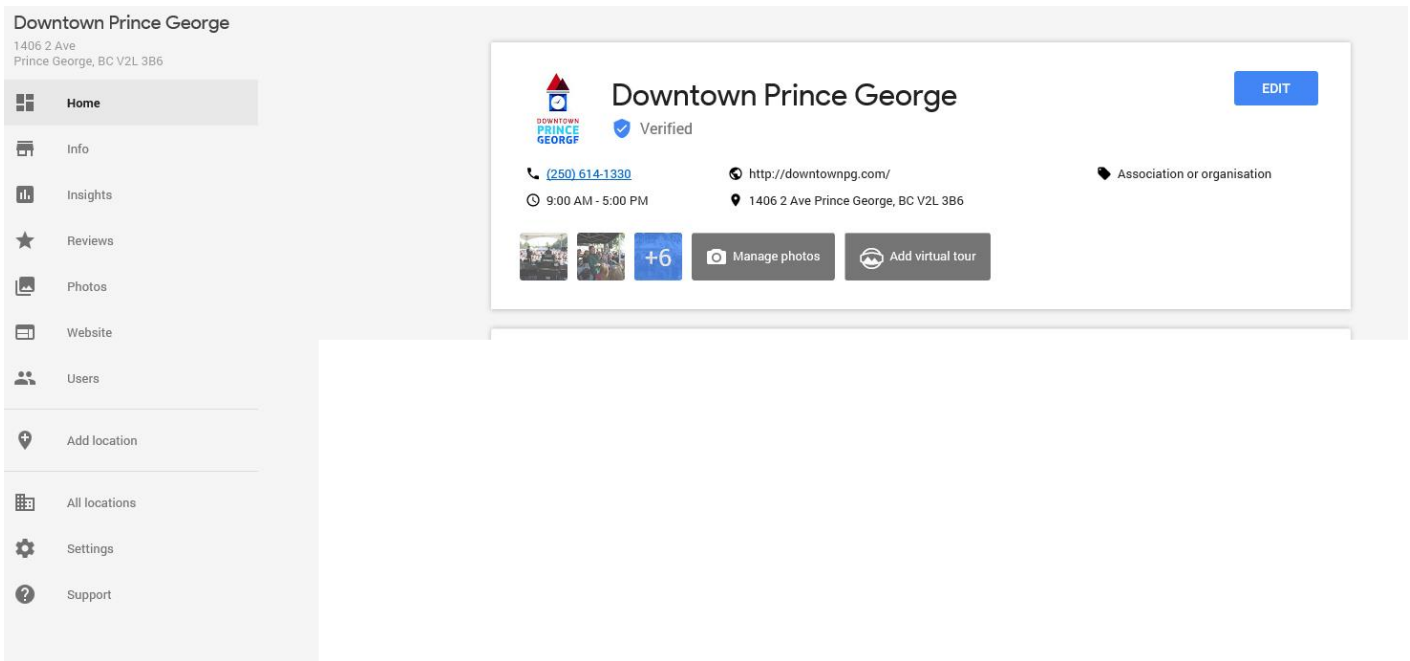
We do recommend choosing to have an automated phone call to your business.



The image shows a screenshot of the Google Business Profile creation form. The form is white with a blue border and is set against a background of a map of British Columbia, Canada. The form fields are as follows:

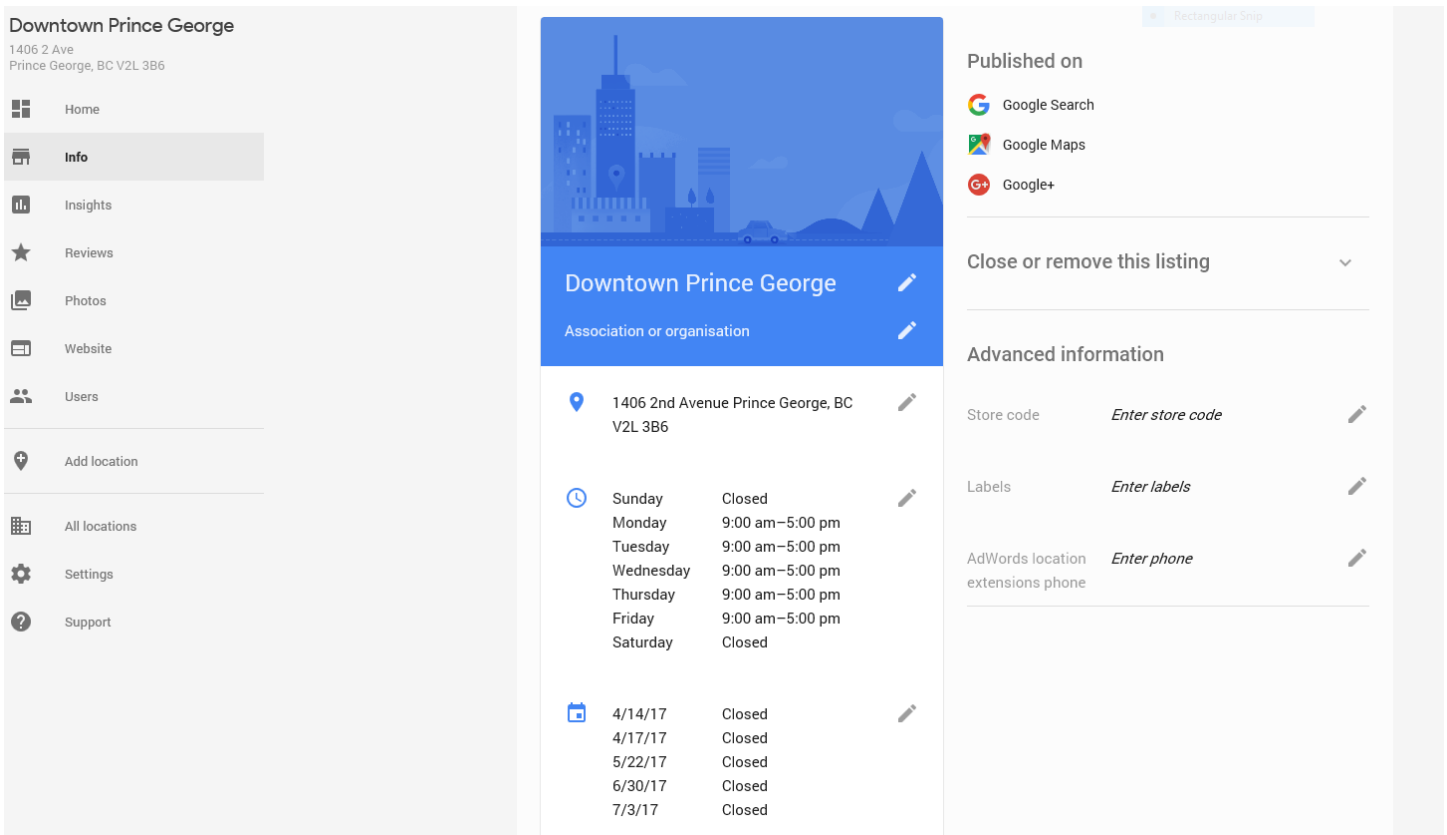
- Business name:** A text input field.
- Country / Region:** A dropdown menu with "Canada" selected.
- Street address:** A text input field.
- City:** A text input field with the placeholder "Enter the full city name".
- Province:** A dropdown menu with "Please select" selected.
- Postal code:** A text input field.
- Main business phone:** A text input field with a red phone icon and a minus sign.
- Category:** A text input field with the placeholder "Enter a category" and a magnifying glass icon.
- Website:** A text input field with the placeholder "Enter a URL".
- I deliver goods and services to my customers at their location - Important information:** A section with two radio buttons: "Yes" (unselected) and "No" (selected).
- Continue:** A blue button at the bottom of the form.

Once you fill all that information in, click the 'continue' button. You will be redirected to a page like the one below, but with your business name.



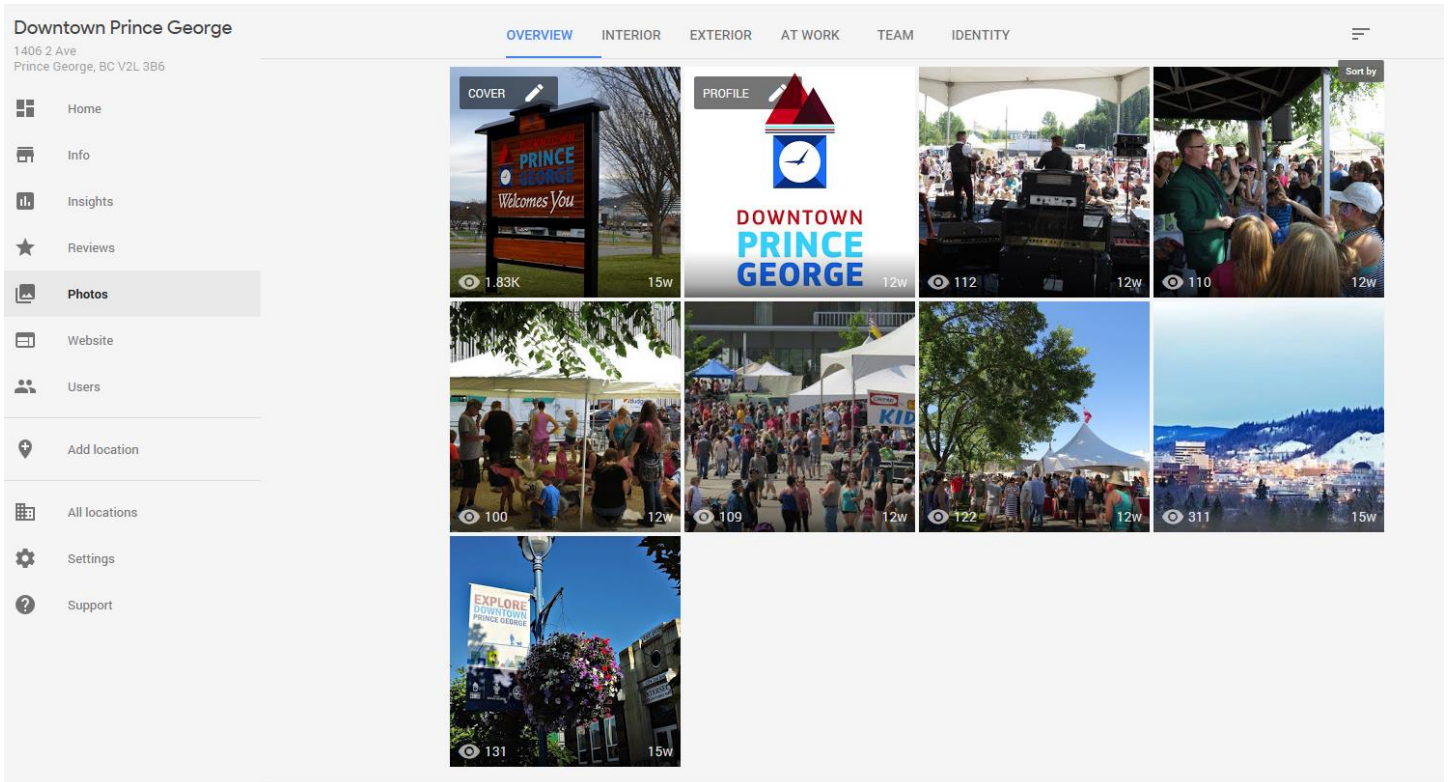
First, select on the 'Info' tab.

You can now enter your business hours and what holidays (STAT, Etc.) your business will be closed.



Now select the 'Photos' tab, enter your Cover Photo and Profile photo first. It's best to use good quality images, so that they don't pixelate when they are viewed online. Please note that your Profile Photo need to be in a square format.

Then take the time to enter in different photos. Showing the interior and Exterior of your business, after that what you add is up to you! Remember the more people see that engages them, the more likely they are to visit your business!



If you need any help, or have any additional questions send an email to info@downtownpg.com and we will be happy to assist you!